



Interior Logging Association

VOLUME 5, ISSUE 3

VOLUME 5, ISSUE 3

JULY 2024

Thank you for another fantastic AGM and Convention!

SUBMITTED BY: TODD CHAMBERLAIN, RFT, ILA GENERAL MANAGER

INSIDE THIS ISSUE:

THANK YOU FOR ANOTHER FANTASTIC AGM AND CONVENTION! 1

THE WILDFIRE REDUCTION EQUIPMENT SUPPORT TRUST (WREST) GRANT IS NOW AVAILABLE! 2

CONGRATULATIONS NANCY HESKETH ON 25 AMAZING YEARS WITH THE ILA 2

SHOW ATTENDEE LIST 3

TAKE TIME TO CHECK IN! 5

WE ARE HAPPY "FORE" A MEMBER OF OUR FORESTRY FAMILY 6

1ST ANNUAL BIG TRUCK SHOW 'N' SHINE AND LOG LOADER WINNERS! 7

MENTAL HEALTH FOR FORESTRY WORKERS 9/10

2024 INTERIOR SAFETY CONFERENCE - SAFETY AT WORK: INSIDE AND OUT 12

SHOW CO-SPONSOR LISTING 13/14

NEW FIRST AID RELATED RESOURCES 18



I think it's safe to say, our 66th AGM and Convention was another very successful event! We had our first annual Big Truck Show 'N' Shine, the return of the log loader competition, lots of vendors, a huge silent auction—with even more donated items than ever before - benefitting the Ty Pozzobon Foundation, celebrations and events with lots of networking opportunities and good conversations about the industry.

At the AGM, Trish Balcaen accepted the nomination for First Vice Chairperson with Shari Smaha retaining the position of Second Vice Chairperson. The ILA would like to extend our thanks to Scott Horovatin and Creole Dufour for their tenure on the board of directors, and for all they contributed to our members. We would also like to officially welcome Darren Getz of San Jose Logging of Williams Lake and Kevin Groot of Groot Brothers in Houston to our board.

We want to sincerely thank all of the [Co-Sponsors](#), [Vendors](#), Members, and individuals who have contributed to this show over the last 66 years. Without your dedication and continued support of the Interior Logging Association and the industry as a whole, events like this would not continue to be possible or feasible.

I would also like to thank our amazing Office Administrator, Nancy Hesketh, who is celebrating 25 years with the ILA, for all of her hard work putting together the show, Betty-Ann McDonald and Ann Polson who set up and maintain the Forest Education Van at the show, and our show coordination volunteers Connie Stass and Wendy Sherman who support Nancy.

Also thanks to our resident Consultant, Meagan Preston, who also supports Nancy during the show and takes care of all of our media and press, and Rob Stanhope the "official" ILA photographer.

Happy to see Summer weather is upon us finally, stay safe out there everyone!

Regards,

Todd Chamberlain, RFT
General Manager, Interior Logging Association



EMBRACING A SUSTAINABLE BRAND NEW DAY FOR TIMBER HARVESTING

THE WILDFIRE REDUCTION EQUIPMENT SUPPORT TRUST (WREST) GRANT IS NOW AVAILABLE!
SUBMITTED BY: INTERIOR LOGGING ASSOCIATION



We were very excited to be able to share with our membership on June 25th, 2024 that the Wildfire Reduction Equipment Support Trust (WREST) grant is now available!

Purpose of the Trust:

The Wildfire Reduction Equipment Support Trust (WREST) was created on May 21, 2024 by the Trustee of the Coastal Logging Equipment

Support Trust (CLEST) after the purpose of the CLEST was completed. The WREST was seeded with a contribution of the approximately \$5.25 Million in the CLEST at that time, and the CLEST was subsequently wound up.

The purpose of the WREST is to help Eligible Contractors purchase Specified Equipment that will be used in BC forestry operations to accomplish all of the following functions:

- Remove combustible materials (including small trees and brush) from the forest floor and other parts of the forest understory

- Transport such removed material to a roadside location from which the material can be accessed for:

sale, or

transport to purchasers or other users, whether for processing as wood fiber or for chipping or burning

- While performing the foregoing functions, maneuver between existing trees without damaging larger trees that are intended to remain standing, without creating significant ground disturbance, and keeping tracks or grooves in the soil to a minimum.

The immediate goal of the WREST is to provide reimbursement for

the lesser of 10% of the total cost of this Specified Equipment or \$100,000. The intent is that this reimbursement will encourage contractors to invest in this equipment and put it to use to reduce the risk of wildfire in British Columbia.

For more information and to apply for the grant please go to <https://wrestrust.ca/>

To apply click here:

<https://wrestrust.ca/eligible-equipment-reimbursement-application-form/>

If you require assistance, please contact Meagan Preston, our Forest Impact Recovery Business Advisor at meagan@interiorlogging.org

CONGRATULATIONS NANCY HESKETH ON 25 AMAZING YEARS WITH THE ILA
SUBMITTED BY: INTERIOR LOGGING ASSOCIATION



For 25 years Nancy Hesketh has been an integral and dedicated part of the Interior Logging Association team.

Yes, Nancy takes care of everything office related, from day-to-day operations, to finances, memberships, resources and a million other things, but she is also the driving force behind the AGM and Convention year after year, orchestrating all of the events, tickets, vendors, venues, and so much more.

The Interior Logging Association was very happy to be able to recognize and celebrate her dedication and unwavering work

ethic over the last 25 years at the AGM and Convention Luncheon this year, amongst so many people that have been lucky enough to have had contact or dealings with her throughout the years.

A little known fact about Nancy, is that she is a die hard fan of the Vancouver Canucks, so the ILA made arrangements to present her with a trip for her and her husband to Las Vegas to see the first regular season game of the Vancouver Canucks against the Vegas Golden Knights.

While we know this is a small token to offer to someone who

has been so dedicated to our organization, we hope that she can enjoy time doing something for herself, when she is always so quick to give back to everyone she deals with day-to-day.

On behalf of the entire organization, thank you Nancy for investing yourself so deeply for the last 25 years to support the organization and its members. You have truly helped shape the ILA in so many positive ways.



THANK YOU TO ALL OF THE 66TH AGM AND CONVENTION VENDORS!

Please consider checking out these businesses after the show!

- [Acera Insurance Services Ltd.](#)
- [Anser Manufacturing Ltd.](#)
- [Aspen Custom Trailers](#)
- [Axis Forestry](#)
- [BC Forest Safety Council](#)
- [BC Timber Sales Kamloops](#)
- [BC Wildfire Service](#)
- [Black Tusk Helicopters](#)
- [Brandt Tractor](#)
- [Brutus Truck Bodies By Normar](#)
- [Canadian Equipment Finance](#)
- [Carvewel Creations](#)
- [Crux Chiropractic](#)
- [Dawson Truck Centers](#)
- [Dearborn Ford](#)
- [Evolution Mechanical](#)
- [Finning Canada](#)
- [First Nations Forestry Council](#)
- [Freflyt Industries Inc.](#)
- [Fullsteam Enterprises Ltd.](#)
- [Great West Equipment](#)
- [Hearing Life](#)
- [Inland Group](#)
- [Interior Logging Association](#)
- [Jim Pattison Lease](#)
- [Kal Tire Kamloops](#)
- [Kamloops Ford Lincoln](#)
- [Kamloops Tirecraft](#)
- [Linde Canada](#)
- [Logging and Sawmilling Journal](#)
- [MacLeod Forest Service](#)
- [Nor-Mar Industries Ltd.](#)
- [Northface Grapple Tips](#)
- [One Eye Industries](#)
- [Peerless](#)
- [Peterbilt Pacific Inc.](#)
- [Profab Manufacturing Ltd.](#)
- [Quadco](#)
- [Royal Inland Hospital](#)
- [RJames Western Star](#)
- [S.T.E.P BC Construction](#)
- [Skyline Models](#)
- [SMS Equipment](#)
- [Southstar Equipment Ltd.](#)
- [Stinson Aerial Services Inc.](#)
- [Streamline Transportation Tech](#)
- [Supply Post](#)
- [T-Mar Industries Ltd.](#)
- [TEAM Aeromedical](#)
- [Team Auctions](#)
- [Telus Business Solutions](#)
- [Thompson Rivers University](#)
- [Top Down Enterprises Inc.](#)
- [Valhalla Equipment Inc.](#)
- [Velocity Truck Centres](#)
- [Vesper Transport Ltd.](#)
- [Wajax](#)
- [Waratah Forestry](#)
- [Weldco-Beales Mfg.](#)
- [Western Gasco](#)
- [Westlake Contracting](#)
- [Woodland Equipment Inc.](#)
- [WorkSafeBC](#)



solid group plans made simple



Caring for your employees' well-being with strong benefit plans.

- Extended health care
- Accidental death & disablement
- Disability (short term & long term)
- Life insurance
- Dental care

For more information and to request a customized quote, visit:
www.jbenefits.com/clients/ila



PHONE 604-980-6227 | TOLL FREE 1-800-432-9707 | www.jbenefits.com

TAKE TIME TO CHECK IN!

SUBMITTED BY: TODD CHAMBERLAIN



As we wrap up another successful ILA AGM and Convention, I've been reflecting on how many people asked me why the Ty Pozzobon Foundation was so important to the Interior Logging Association.

For me, the answer is simple. Ty's passion for rodeo was well known throughout that community, Canadian Champion in 2016 and fourth at the PBR Built Ford Tough World Finals in Las Vegas. The road to success was not an easy one, multiple concussions in the rodeo arena caused irreparable damage and sadly on January 9th, 2017, Ty took his own life. It was later confirmed that he suffered from Chronic traumatic encephalopathy (CTE) the first confirmed case identified in a bull rider.

The forest industry, ranching and rodeo share a common theme. We are part of a community - and being part of that community means we help each other.

Ty's grandparents, Fred and Carol Lowe were and are a mainstay of the forest industry for over 35 years in Princeton and Merritt. Ty's parents and his aunt and uncle are also involved in the industry.

The Lowe family has been a strong supporter of our industry, this association, and their community, not just in the employment that they have provided but in the contributions to local events and charities. They are one of the best examples of why associations like ours exist. I was personally fortunate to have worked with the Lowe family for over 25 years.

Ranching and rodeo are as important to many rural communities as forestry. That means we need to see our friends, family and co-workers come home safe.

Forestry, ranching and rodeo tend to be a male dominated industry, where guys have to portray toughness even when the situation isn't safe. When Leanne Pozzobon told Ty's story at the Interior Safety Conference, she focused on this culture of toughness - if you were hurt, you were told to "Cowboy Up" shake it off and get ready for the next competition.

Leanne expressed the need for us all to get involved if we

start to see changes to that culture. While Ty's passing was a tragedy, his family is creating a platform for change, something I am sure we can all agree we need to support.

Our industry is changing, and contractors are facing many new and complex issues - AAC reductions, increased costs to operate, regulatory changes, tougher ground - that are making it even more challenging to operate. These added problems have certainly caused added stress and it's even more important that our employees have what they need to operate safely and come home at the end of their shifts.

This past year, our industry lost one of our own, a true ambassador. I have heard the same story from many of you, "I was just talking to him, and he didn't say anything." It's important that we take the same time to check in with each other and ourselves, the days of "Cowboy Up" are over.

If you are still struggling with building an Employee Assistance program, I encourage you to reach out to the BC Forest Safety Council or WorksafeBC for help. If you are a Forest Licencee, take some time to talk with your contractors, make sure that they have the resources that both they and their employees need, even if means sharing your internal programs. Our industry is at a crossroads right now, we will not always agree on some things, but I know that we all agree on this.

Take the time to check in on each other and make sure that you take the time to check in on yourself.

#livelikety
#letstalk
#mentalhealthforall

To learn more about the Ty Pozzobon Foundation please visit their website:

<https://typozzobon.com/>



WE ARE HAPPY "FORE" A MEMBER OF OUR FORESTRY FAMILY
CONTENT COPIED FROM FACEBOOK POST



win-a-car for a hole-in-one hole."

Tyson "You just won a car!"

Chris "I won a car?"

Chris "I DID! I JUST WON A CAR!"

"Clubs were thrown in the air and as soon as Tyson saw it was in the hole he turned and charged at me for a big old bear hug. If I didn't brace myself I would have ended up on the ground."

His new car is a KIA Sportage.

Ewings, a 14 handicap golfer, who described himself as an "average hacker" was overjoyed at the accomplished. "It definitely ranges up there as a high point in my life."

Timely too, as Chris and Lisa had earlier given Lisa's car to their youngest daughter.

He's been golfing for about 20 years and usually plays twice a week as a member of the Nakusp and Fauquier courses.

The event was to raise money for Royal Inland Hospital and has brought in an estimated \$240,000 this year.

It was the 27th Annual South Central Trucking & Industry Charity Golf Tournament which began following a tragic accident in the trucking industry.

The team represented the ILA in the event. Ronald Volansky was the organization's Chair for the previous two years.

"ILA members are your neighbours in communities from the Fraser Valley to the East Kootenays, North to Fort St John and West to Smithers. Our association's strong and influential voice in the forest industry represents independent loggers' interests throughout this region.

We work to keep the timber harvesting industry thriving, promoting the benefits of a robust and sustainable industry, raising awareness and educating our youth about the importance of forestry and ensuring our members continue to be a strong economic force in the province.

Through our solid alliance with other forest sector organizations, the ILA has contributed to the growth and cultivation of a healthy, sustainable and vibrant forest resource in British Columbia that will support our communities, families and economy today and always."

At a charity golf tournament in Kamloops, Nakusp's Chris Ewings, of R&A Logging, not only had a hole-in-one but ALSO won a car doing it!

Chris was part of a team (with Ronald and Tyson Volansky of R&A Logging and Randy Durante of the Interior Logging Association) representing the ILA.

In play at the Rivershore Estates & Golf Links, Ewings, in a four-man, scramble format, was on the second hole about 160 yards away from the pin.

With a six-iron his drive seemed to be pretty good.

"I hit it and it was right on line and it rolled towards the pin, We assumed it was just on the green somewhere. We walked the green and didn't see any balls whatsoever ... one of the spotters just didn't react so Tyson says "geez I'd better check the hole". As he saw a reflection of the ball in the hole, he turned and says "Like Dude you just got a hole-in-one!" I was so excited that I got my first hole in one that I completely forgot it was on a



Interior Logging Association

Not an Interior Logging Association Member yet?

Membership has Its benefits!

CLICK HERE TO JOIN TODAY

1ST ANNUAL BIG TRUCK SHOW 'N' SHINE AND LOG LOADER WINNERS!

CONTRIBUTED BY: INTERIOR LOGGING ASSOCIATION



This year, the 66th ILA AGM and Convention show saw expansion with the 1st Annual Big Truck Show N' Shine which saw a mix of newer and antique large trucks attracting almost 2 dozen entrants.

Three trophies were awarded including the Minister's Choice awarded to Klusko



Logging, the Chairperson's Choice to Bruce Shantz and the Shantz Family, and the People's Choice to SS Logging Ltd.

We would like to extend a thank you to RJames Western Star for their generous donation of a "Shine Kit" to each of the winners in addition to the



trophies provided by the Interior Logging Association.

The Log Loader Competition was a full event as usual and saw the following operators winning some great cash prizes for the fastest time and most accurate.

Our top operators were...



1st place - Ryan Bremner - \$1000

2nd place- Kieran Brown - \$300

3rd place- Corey Allan - \$200!

Congratulations to all of the participants at both of these events!

HearingLife

Trusted Partner of



Discover the latest in hearing aid technology with a FREE 30-day trial!

Keep hearing & being you

ILA Members & Family get an EXTRA 10% off the final purchase price of hearing aids!



Call the ILA office for your member code



EMBRACING A SUSTAINABLE BRAND NEW DAY FOR TIMBER HARVESTING



COUNT ON US TO HELP YOUR BUSINESS

At Ritchie Bros. we know your needs change. That's why we offer you more ways to sell when, where, and how you want. From the world's largest live auction company to a global network of online selling channels, today we're more than auctions – much more.

Contact us today if you need to buy & sell equipment.

1.866.506.0079 | RitchieBros.com

rb RITCHIE BROS.™

rb RITCHIE BROS.
Auctioneers®

IRON PLANET®

Marketplace 



EMBRACING A SUSTAINABLE BRAND NEW DAY
FOR TIMBER HARVESTING

MENTAL HEALTH FOR FORESTRY WORKERS

SUBMITTED BY: WORKSAFE BC



Normalizing mental health struggles is key to overcoming stigma in the workplace

It's getting dark and the kids have already had dinner and gone to bed by the time Chris gets home from work. He pours himself a drink— he's been doing that more often lately, he notes. Thinking back on the day, he wonders why he got so upset at Josh for taking a wrong spur off the FSR – after all, it wasn't a big deal – he shouldn't have made it into a big deal. His thoughts shift to whether his job will be there tomorrow. What will he do if he gets laid off? How will he support his family? He takes another sip of his drink. He feels exhausted and depleted. Better suck it up, he thinks to himself, have to get up early tomorrow.

Whether it's forestry, or some other industry, a story like Chris's is not uncommon. In a 2019

WorkSafeBC study conducted with workers and employers in the construction sector, 55 percent of respondents reported having a mental health concern and/or substance misuse. There is no reason to believe that other industries are immune. According to the Canadian Mental Health Commission, in any given year, one in five people in Canada will experience a mental health problem or illness, with a cost to the economy in excess of 50 billion dollars. Many workers and employers would agree that mental health is an important issue. Yet, the stigma associated with mental health means that workers often fear the consequences of opening up at work to get the help they need.

Forestry workers face multiple stressors

Is it even surprising that mental health concerns are becoming a subject of conversation in the forest industry? Whether it's uncertainty caused by

declining harvest levels, reports of mill closures, or the threat of wildfires, all the different pressures eventually take their toll. Job insecurity, financial strain, long hours and the unpredictable nature of work can add pressure, increase tension and anxiety, and affect sleep. All this has a profound adverse effect on both the physical and psychological wellbeing, but all too often, these factors are compounded when people attempt to cope by self-medicating, whether it's with alcohol, marijuana, or other stimulants.

Creating a workplace culture that supports mental health

What is often a challenge, is a workplace culture where there is long-standing stigma surrounding mental health and not much support for help-seeking. In fact, 79 percent of workers feel there is some level of stigma associated with mental health concerns – a statistic that goes up to 85 percent when substance use and addiction are involved.

The study by WorkSafeBC highlighted the internal and external pressures that make it difficult for people to admit and

share their concerns. These include perceptions that concerns about mental health are seen as a sign of weakness within “macho” and “tough” industry cultures that make workers fear repercussions for disclosing their concerns. Fortunately, these perceptions are starting to change and we find ourselves in a better position to recognize the value of conversations and our ability to support those around us.

So, what can supervisors, managers, and co-workers do to change the culture and help others who may have concerns about their mental health? It begins with recognizing the signs that someone may be struggling – for example, changes in behaviour, looking tired, always being late, and having a shorter fuse. The next step is to have a conversation with that person, which could look something like:

“Chris, I've noticed some changes in your behaviour lately. You've been late a few times and you seem to have a short fuse, like when you yelled at Josh the other day.

MENTAL HEALTH FOR FORESTRY WORKERS

SUBMITTED BY: WORKSAFE BC

WORK SAFE BC

It's not like you and I'm concerned about you. I want to make sure you're okay and if you need anything from me."

When talking to workers and colleagues who may be having a hard time, it is a good approach to normalize the situation and the person's feelings — while ensuring you're not stepping into a counsellor role yourself. For example, Chris' supervisor might add:

"I went through a divorce last year and there was a stretch of time where I found I had a real short fuse, but doing some online meditation really helped me."

Ultimately, there may be a range of strategies and solutions that are right for an individual, but they all need a starting point and that starting point could be a conversation with a coworker. During these challenging times faced by the industry, it is more important than ever to check in with people, even if it's in a five-minute huddle at the start of the day. Recognizing and

talking about common stressors and the feelings associated with them will change the workplace culture overtime. Fostering a supportive crew and good relationships between supervisors and workers is also a critical factor.

It is important to realize that almost everyone struggles at some point in time and it is important to recognize the signs early, before they become really problematic.

There are many free online resources, such as meditation apps, articles on coping strategies, and guides, that are great first steps to help workers and employers develop mental wellness skills. In addition, organizations such as the Canadian Mental Health Association has various resources to promote mental health:

[Mental Health Information - CMHA British Columbia](#)

Similarly, the Workplace

Strategies for Mental Health website offers many tools and resources for employees and people leaders (such as suicide response, grief management, psychological safety, interpersonal relations):

[At work - Resources for employees - Workplace Strategies for Mental Health](#)

Other Resources:

Support for grief, and bereavement - BC Bereavement Helpline - 1.877.779.2223

[British Columbia Bereavement Helpline - Homepage New \(bcbh.ca\)](#)

WorkSafeBC resources:

Crisis Support Line: contact us if you or your family is in emotional crisis and you've been injured at work. Our staff can provide support to you and your family, refer you to other services in your community, and alert us so we can follow up with you - available 24

hours/7 days a week. 1-800-624-2928

You don't need a WorkSafeBC claim to call us for help. However, if you have been injured at work and would like to start a claim, please contact our [Claims Call Centre](#) for help with the claims process.

Critical Incident Response Program: confidential support if you have experienced a traumatic event in the workplace. Available 9am-11pm, 7 days/week. 1-888-922-3700



Savings Program



- ✓ Reserve ahead and save
- ✓ Lowest rates available on the app or online
- ✓ Optional detailing and oil change services
- ✓ Complimentary EV charging at select locations

Interior Logging Association Members Reserve and Save on Airport Parking

With a network that spans coast to coast, Park'N Fly is focused on providing our customers with cost-effective parking options while enjoying a park happy experience with every stay. To access your member discount and save you have three options:

- 1. Reserve via Park'N Fly App:** Easily reserve your next parking stay using the Park'N Fly app and get the lowest rate! Plus, save your payment information to your reservation and you'll be able to check in and out from the convenience of the app. Download today or click to learn more at www.parknfly.ca/app.
- 2. Reserve as a Rewards Member:** Existing Park'N Fly Rewards members, sign into your rewards account, and access the lowest parking rates by saving your corporate discount code to your profile. Sign into your account via the Park'N Fly Canada app or online at www.parknfly.ca/rewards.
- 3. Reserve Online:** Click *RESERVE ONLINE* (to the right), select your preferred location, and enter your travel dates and times to reserve your next parking stay.

Plus: Earn valuable Aeroplan points on every eligible stay. *

Enter Discount Code

Contact Us for Code

at time of reservation



RESERVE ONLINE

Vancouver • Edmonton • Winnipeg • Toronto • Ottawa • Montreal • Halifax

Association rates are discounted off regular rates. Various conditions apply. Rates are subject to change. Park'N Fly Rewards Program not applicable in Halifax. Enrollment in Park'N Fly Rewards is temporarily suspended. The existing Park'N Fly Rewards program will be discontinued effective December 31, 2023. Updates regarding the new Park'N Fly Rewards program will be posted at www.parknfly.ca/rewards. Please visit parknfly.ca and enter your corporate discount code to validate rates. *Taxes, surcharges, and car care services are excluded from corporate pricing. Aeroplan not available at Montréal location. *Aeroplan is a registered trademark of Aeroplan Inc., used under license. *The Air Canada maple leaf logo is a registered trademark of Air Canada, used under license. Park'N Fly is a registered trademark of 1884901 Alberta Ltd. Updated August 2023.

AEROPLAN 

www.parknfly.ca

2024 INTERIOR SAFETY CONFERENCE – SAFETY AT WORK: INSIDE AND OUT

SUBMITTED BY: BC FOREST SAFETY COUNCIL



BC Forest Safety

Safety is **good** business

The Interior Safety Conference (ISC) is an annual event that brings together professionals from the BC forest sector to discuss safety-related issues and explore ways to improve safety practices in the industry. This year's conference took place on May 9th at the Coast Kamloops Conference Centre, and was a great success.

BC Forest Safety Council (BCFSC) would like to thank everyone who joined us at this year's ISC. We were thrilled to see such a large turnout; your participation made this event a huge success.

The ISC is held in partnership with the Interior Logging Association (ILA) Conference, and we would like to thank the ILA for their support. We would also like to extend our gratitude to our industry sponsors,

WorkSafeBC, BCFSC, Canfor, Interfor, Weyerhaeuser, West Fraser, Gorman, and Tolko. Thanks to their generous support, we were able to offer the event free of charge to all attendees.

This year's theme, "Safety at Work: Inside and Out" focused on empowering individuals to take ownership of safety for themselves and in the workplace. We were fortunate to have an excellent lineup of keynote speakers:

Justin Brien, mental health advocate: Justin openly shared his struggles with substance use and mental health struggles encouraging the audience to let go of the stigma around mental health.

Steve Donahue, a bestselling author and motivational speaker: Steve gave us a gripping tale of his odyssey across the Sahara Desert. He gave his personal insights on how to succeed through

constantly shifting situations with story-based tools that battle disruption, inspire transformation and drive engagement.

Leanne Pozzobon was our special guest speaker: Leanne shared her personal story about the loss of her son Ty who took his own life after suffering multiple concussions in the rodeo arena as a professional bull rider. Leanne educated us on "The Invisible Injury", how to recognize the signs and symptoms and understand the underlying mental health challenges that shadow these injuries.

In addition, we were pleased to have presentations from Will Dirksen from WorkSafeBC who gave a presentation on the upcoming First Aid changes coming into effect November 1, 2024. BCFSC's Transportation and Northern Safety Manager, Dorian Dereshkevich shared the

work he has been working on with TAG on Emergency Response Planning. Elise and Teresa Cheung from WorkSafeBC also gave a presentation on the Return-to-Work amendments to Bill 41. All three of these presentations are available to download and share with your crew.

[WorkSafeBC First Aid Presentation](#)

[Return to Work - Bill 41 Overview](#)

[BCFSC ERP Presentation](#)

Looking ahead, we invite those located on or near the coast, to mark their calendars for the 2024 Vancouver Island Safety Conference, which takes place on Saturday, October 26, 2024, at the Vancouver Island Conference Centre in Nanaimo, BC. We hope to see you there.

Once again, on behalf of BCFSC, we would like to express our sincere thanks to everyone who made the ISC 2024 possible. Your dedication to safety in the forestry industry is truly inspiring, and we look forward to continuing this important conversation in the years to come.



Truck Logger BC is published quarterly by the Truck Loggers Association in partnership with the Interior Logging Association and North West Loggers Association. This magazine is distributed to over 10,000 readers who rely on the forest industry across British Columbia for their livelihoods. It is the pre-eminent source for timber harvesting and forestry perspectives, information and updates. Get Truck Logger BC Magazine delivered to your door for FREE! Click on the link to be re-directed and sign up!

A HUGE THANK YOU TO ALL OF OUR SHOW CO-SPONSORS FOR SUPPORTING OUR 66TH AGM AND CONFERENCE! WE COULD NOT DO IT WITHOUT YOU!

ALL LINKS ARE ACTIVE FOR EACH SPONSOR, CHECK THEM OUT!



BC Forest Safety

Safety is good business



BC COUNCIL OF FOREST INDUSTRIES

CANOE brand®
Canoe Forest Products

DOWNIE
TIMBER LTD.



GORMAN
The Finest Boards

GREAT WEST
EQUIPMENT
"SERVICE FIRST"



MERCER

MNP
ACCOUNTING
CONSULTING
TAX



Northbridge®
Insurance



EMBRACING A SUSTAINABLE BRAND NEW DAY
FOR TIMBER HARVESTING

A HUGE THANK YOU TO ALL OF OUR SHOW CO-SPONSORS FOR SUPPORTING OUR 66TH AGM AND CONFERENCE! WE COULD NOT DO IT WITHOUT YOU!

ALL LINKS ARE ACTIVE FOR EACH SPONSOR, CHECK THEM OUT!



Thursday, August 8

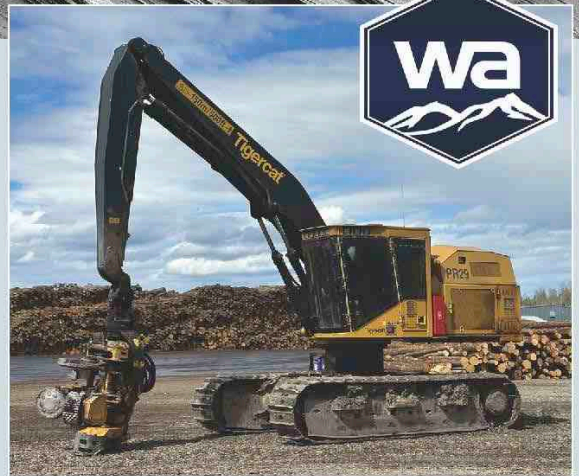
Major Realignment for JV Logging Ltd.

Weaver Auction Site — Lot #1, Boundary Rd.,
Prince George, British Columbia, V2N 2H8

TIMED ONLINE AUCTION



2019 TIGERCAT 635G 6X6 GRAPPLE SKIDDER



2022 TIGERCAT H855E PROCESSOR



2015 TIGERCAT 630E 4X4 GRAPPLE SKIDDER



2018 TIGERCAT 855E FELLER BUNCHER



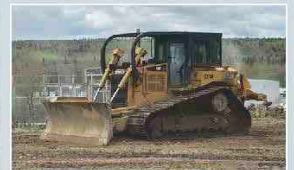
2019 WESTERN STAR 4900SB TRI DRIVE SLEEPER TRUCK



2017 TIGERCAT 880D
LOG LOADER



2012 HITACHI ZX350LC-5N
HYD. EXCAVATOR



2011 CATERPILLAR D6T
LGP CRAWLER



2 — 2017 KENWORTH T800 TRI DRIVE LOGGING TRUCKS



1 of 4 — 2019 PETERBILT 367
CAB & CHASSIS



2018 KENWORTH T800 TRI DRIVE TRUCK TRACTOR



2017 WESTERN STAR 4900SB
TRI DRIVE DUMP TRACTOR



2014 FORD F-550 XLT
CREW CAB SERVICE TRUCK



2016 PETERBILT 567 T/A
SLEEPER TRUCK

CONSIGN YOUR EQUIPMENT!
Contact a Sales Representative!

Lorne: (250) 219-0871
Evan: (250) 219-4539



Download our app to bid
during our Timed Auctions!

weaverauctions.com

Welcome to **Specsavers Corporate Eyecare**



We've been providing eyecare and eyewear in locations around the world for about 40 years now. So, while we're pretty new to Canada, we've always been about making affordable eyecare and eyewear accessible to everyone.

Why your eye health matters

An eye exam is similar to having a check-up with your physician, although a lot of people don't see it that way. Because getting an eye exam is not just about checking how well you can see, it's also an important eye health check. In fact, an eye exam can detect serious health issues, including high blood pressure, diabetes or glaucoma. We use an advanced 3D eye scan, called an OCT (optical coherence tomography), for every patient, to make sure that there's a record of your eye health and that your optometrist can detect the earliest signs of eye conditions before they become a more serious problem.

What we offer

- 30% off lens upgrades exclusive to all members.
- Comprehensive eye exams with an independent optometrist, including diagnostic testing and OCT scanning as standard, from \$99.
- A range of glasses styles, starting from just \$69, as well as designer brands from \$99, contact lenses and lens upgrades to choose from.
- Make your vision insurance benefits go further with our two pairs of glasses from \$149 offer.
- Great offers and promotions for your company throughout the year.
- With over 33 locations (and counting) in British Columbia, you're sure to find a location with a friendly team of optometrists and opticians near you.
- Most of our locations are open seven days a week, so it's easy to drop by at a time to suit you.

Ready to start?

You're already signed up, which means that you're ready to take advantage of some great eyecare and eyewear perks.

All you need to do is drop by your nearest Specsavers to get started. Just bring along the code for 30% off lens upgrades and something to confirm you're a member and we'll sort out all the rest for you.

Promo Code:

Book an eye exam today at [specsavers.ca](https://www.specsavers.ca)

Terms and conditions

Discount only available for ILA members on presentation of proof of employment and voucher in store. Offer can be used in conjunction with our two pairs from \$149 offer. Offer cannot be used in conjunction with any other vouchers or offers including when you purchase a single pair of glasses from our \$149 range and above, as a lens upgrade is already included in this bundle. Excludes safety eyewear. Discount is applied before taxes. No cash surrender value. Cannot be applied to past transactions. Offer details are subject to change. \$99 eye exam. Applies to comprehensive eye exam. Eye exams are provided by independent optometrists. Prices may vary by location. Contact store for details. Additional charges may apply for other optometric services dependent on the patient's health requirements. Such additional charges may be covered by provincial health care plan for eligible patients. Glasses from \$69: includes single-vision lenses. Two pairs with vision insurance: includes standard single-vision lenses.



EMBRACING A SUSTAINABLE BRAND NEW DAY
FOR TIMBER HARVESTING

ILA has partnered with
 **HearingLife**

*Canada's largest hearing
healthcare provider*

HearingLife's vision is simple: "help more people hear better." Hearing better matters because when people hear better, they live better. Conversations are easier. Relationships are more rewarding. So HearingLife provides cutting edge hearing solutions through personalized hearing care—a lifechanging combination.

ILA members can take advantage of exclusive benefits at HearingLife and Network Partner locations. PLUS, these benefits can also be shared with immediate family!

**Simply mention your ILA membership at any of our
400+ clinics to receive your exclusive benefits below:**



Save an EXTRA 10% on the final purchase price of hearing aids and custom ear plugs**



360-AfterCare:
3 years of all the service and support you need including a 3 year warranty



50 AIR MILES® Reward Miles for completing a FREE hearing test.* Up to 2,000 AIR MILES® Reward Miles with the purchase of select hearing aids***



3 years of complimentary batteries with the purchase of a hearing aid

Have any questions or want to book an appointment? We are "hear" for you.
Contact us at **1-833-523-3519**

Promo Code [Contact ILA](#)

*A comprehensive hearing assessment is provided to adults ages 19 and older at no cost. The results of this assessment will be communicated verbally to you. If you request a copy of the Audiological Report, an administrative fee will apply. Child hearing tests are conducted at select locations for a fee, please contact us for more information. Offer not available in Quebec or for industrial hearing tests. This promotion is valid for select hearing aid models and cannot be combined with more than 1 partner promotion or discount unless stated otherwise. **The extra 10% will be applied to the remaining balance on hearing aids and accessories after all other discounts (if applicable). Offer applies to private sales of select hearing aids and discount is applied after any Government funding has been deducted. Some conditions apply, see clinic for details. AIR MILES available only at participating locations. ®™ Please allow 45 days for Miles to be posted to your Collector Account. ***Reward Miles value is non-transferable and depends on select models purchased.

**NEW FIRST AID RELATED RESOURCES AVAILABLE
UPDATE SUBMITTED BY WORKSAFEBC**

WORK SAFE BC

WorkSafeBC's First Aid webpage [First aid requirements - WorkSafeBC](#) has been updated; notably, with the addition of two documents:

1. A template first aid assessment tool available in a PDF format [First aid assessment worksheet | WorkSafeBC](#) meant to assist and guide employers through their first aid assessment process; and,

2. A comprehensive FAQ document [Changes to occupational first aid requirements: Frequently asked questions | WorkSafeBC](#)

Amendments to the Occupational Health and Safety Regulation, as it pertains to occupational first aid, will take effect November 1, 2024.

The interval before implementation is meant to allow employers time to

obtain any required first aid training and equipment necessitated by these changes.

If you require more information about these changes and updates please visit the linked documents or visit the WorkSafeBC Website at:

www.worksafebc.com



MARK YOUR CALENDARS!!!

INTERIOR LOGGING ASSOCIATION'S 67TH ANNUAL AGM AND CONFERENCE

May 1st - 3rd 2025, Kamloops B.C.

Check us out at www.interiorlogging.org for the latest news and information

Contact us by phone at 250-250-503-2199, or Email us at info@interiorlogging.org



Spread the News!

ILA Scholarships Deadline is July 31st, 2024!

Available Scholarships

The ILA awards four scholarships annually to students preparing for a bright, beautiful future in BC's forest industry. We offer the following:

- **\$2,000 FORESTRY SCHOLARSHIP**
- **\$1,000 MEMBER SCHOLARSHIP**
- **\$1,000 MEMBER TRADES SCHOOL SCHOLARSHIP**
- **\$1,000 ASSOCIATES SCHOLARSHIP**
-

Applications will close July 31, 2024. Applications postmarked later than July 31 will not be considered.

The Fine Print Scholarships are awarded as soon as possible after the closing date of July 31. Payment will be made upon confirmation of registration in a full-time program of studies. In the event that no candidate has reached an acceptable standard in any or all scholarship categories, the scholarship committee may elect not to make an award. They may also, at their discretion, make lesser awards to more than one candidate in a category.

Download your [ILA SCHOLARSHIP APPLICATION FORM](#) by clicking on the link.

Looking for funding? Opportunities arise all the time through the Province of BC



Click on the picture link above and check back often for new funding avenues!



We now have advertising opportunities available in the ILA Newsletter!

To secure your quarter, half or full page advertising space contact us today!

Email: todd@interiorlogging.org

Call: (250) 503-2199

CONTACT US

3204 39th Avenue
Vernon, B.C. V1T 3C8

Phone: 250-503-2199

Fax: 250-503-2250

Email: nancy@interiorlogging.org

Todd Chamberlain, RFT, General Manager

E-mail: todd@interiorlogging.org

Forestry is British Columbia's founding industry and logging is its lifeblood.

The Interior Logging Association knows the importance of timber harvesting to BC's economy and has been a strong and unifying voice for its members since 1958.

The strength of the Interior Logging Association lies in the commitment of our members to work together to secure a thriving industry that supports our local communities and economy—one that embraces a sustainable brand new day for timber harvesting.

CHECK OUT OUR WEBSITE!

WWW.INTERIORLOGGING.ORG



EMBRACING A SUSTAINABLE BRAND NEW DAY FOR TIMBER HARVESTING